

CHROME
SERIES

4032

HexArmor®

Chrome Series® Our signature mechanic's style glove line that redefined cut protection, impact resistance, and dexterity in the safety industry.

The Chrome Series® 4032 features an interior layer of SuperFabric® brand material on the palm to deliver outstanding cut, puncture, and abrasion protection where you need it most. The glove's durable, unique synthetic leather palm maintains excellent grip in dry and light oil situations, making it one of the safest mechanic's style gloves on the market.

Protection zones



ANSI/ISEA 105-2016
CUT

A8



ANSI/ISEA 105-2016
GRAM SCORE

5150



ANSI/ISEA 105-2016
PUNCTURE

2



ANSI/ISEA 105-2016
ABRASION

6



ANSI/ISEA 105-2016
CONTACT HEAT

2

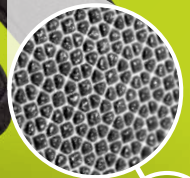


EN 388: 2016

4X21FP

Attributes

Style:	Mechanics
Grip:	Wet or dry
Cuff style:	Neoprene with hook and loop closure
Sizes:	7/S through 12/3XL



SuperFabric®
inside

Product features

- SuperFabric®** brand material provides industry-leading cut, puncture, and abrasion resistance on the palm (interior layer)
- Synthetic leather palm provides reliable grip in dry or light oil situations while increasing abrasion resistance
- Interior seams are reinforced with a double stitched core-spun thread, adding further durability and longevity
- Neoprene cuff with hook and loop wrist closure for a comfortable, secure fit
- Form-fitting, quality materials for increased dexterity and all-day comfort
- Launderable

Call **1.877.MY ARMOR** or visit **hexarmor.com**

HexArmor® products are cut and puncture resistant, NOT CUT AND PUNCTURE PROOF. Do not use with moving or serrated blades or tools. User shall be exclusively responsible to assess the suitability of the product as specified for any individual application or use. Protection zones are to be used as a general guide. Actual product protection zones may differ. Product features, design, protection zones subject to change.

Protected by patents and patents pending

*SuperFabric® is a registered trademark of HDM, Inc.